

BARN QUILTS

SKU GUIDE



by Jennifer Long of Bee Sew Inspired

Thank you for choosing the Barn Quilts Kit featuring the Country Life Collection by Jennifer Long of Bee Sew Inspired.

Picture driving through the countryside. You are greeted with the sights and sounds of barn yard animals, busy families and farmers working the land, and endless fields of color. If you're lucky, you may spot a few barn quilts decorating the landscape! Have fun making your own unique barn quilts by mixing and matching fabrics and colors. And of course, in the center is a beautiful red, traditional barn!



Finished quilt size: 64" x 64"
KT-13790



EVENING MAIN
C13790-EVENING
1 F8
ASSORTED PRINT FOR BARN
QUILTS



GRASS MAIN
C13790-GRASS
1 F8
ASSORTED PRINT FOR BARN
QUILTS



FIELD CHICKEN SCRATCH
C13791-FIELD
1 F8
ASSORTED PRINT FOR BARN
QUILTS



HARVEST CHICKEN SCRATCH
C13791-HARVEST
1 F8
ASSORTED PRINT FOR BARN
QUILTS



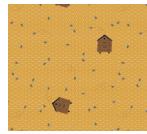
PASTURE CHICKEN SCRATCH
C13791-PASTURE
1 F8
ASSORTED PRINT FOR BARN
QUILTS



PUMPKIN FIELD CROPS
C13794-PUMPKIN
1 F8
ASSORTED PRINT FOR BARN
QUILTS



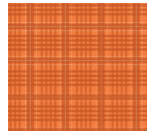
SPROUT FIELD CROPS
C13794-SPROUT
1/4 YARD
ASSORTED PRINT FOR BARN
QUILTS, GREEN BARN
DETAIL



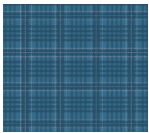
HONEY WORKER BEE
C13795-HONEY
1 F8
ASSORTED PRINT FOR BARN
QUILTS, LARGE BARN
QUILT



BARN FLANNEL SHIRT
C13796-BARN
1 F8
ASSORTED PRINT FOR BARN
QUILTS



CARROT FLANNEL SHIRT
C13796-CARROT
1 F8
ASSORTED PRINT FOR BARN
QUILTS



NIGHT FLANNEL SHIRT
C13796-NIGHT
1 F8
ASSORTED PRINT FOR BARN
QUILTS



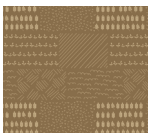
SUNFLOWER CHICKEN WIRE
C13797-SUNFLOWER
1 F8
ASSORTED PRINT FOR BARN
QUILTS



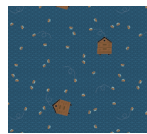
WHEAT MAIN
C13790-WHEAT
3/4 YARD
ALTERNATE SQUARES, BARN
DETAIL (*WINDOWS*)



DENIM GRAZING THE HAY
C13793-DENIM
7/8 YARD
BLUE OUTER BORDER



SOIL FIELD CROPS
C13794-SOIL
1/4 YARD
ASSORTED PRINT FOR BARN
QUILTS, BROWN BARN
DETAIL



NIGHT WORKER BEE
C13795-NIGHT
1/4 YARD
ASSORTED PRINT FOR BARN
QUILTS, BLUE BARN
DETAIL



BARN CHICKEN WIRE
C13797-BARN
3/4 YARD
RED PRINT FOR TOP OF BARN,
ASSORTED PRINT FOR BARN
QUILTS



NIGHT CHICKEN WIRE
C13797-NIGHT
7/8 YARD
ASSORTED PRINT FOR BARN
QUILTS, BINDING



BARN BURLAP
 C13798-BARN
 1 1/4 YARDS
 RED PRINT FOR BOTTOM OF
 BARN, RED INNER BORDERS



COTTON BURLAP
 C13798-COTTON
 2 YARDS
 WHITE BACKGROUND AND
 BARN DETAIL



STRAW BURLAP
 C13798-STRAW
 7/8 YARD
 STRAW BARN BACKGROUND,
 ASSORTED PRINT FOR BARN
 QUILTS

DESIGNER NOTES

Listed next to each SKU image on Pages 1-2 of the SKU Guide is the following information:

- Fabric name
- SKU number
- Yardage included in the quilt kit
- Location of each fabric in the quilt (*Fabric Placement*)

Use the information provided next to each SKU image to pair fabrics included in the quilt kit with the fabric descriptions/placements listed on the back cover of the Barn Quilts Pattern.

Some SKUs are used in more than one location in the quilt, and is noted next to each SKU image.

If a SKU is used in more than one location (*Example: Barn Chicken Wire is used for the "Red Print for Top of Barn" and "Assorted Print for Barn Quilts"*), it is recommended to find the corresponding cutting instructions and cut the largest pieces first. Then, set aside the remaining yardage for Barn Quilts A-L to avoid fabric shortages.

Refer to the final cover image to allocate exact fabric placement if desired, for the Barn Quilt blocks.




Riley Blake
DESIGNS™



Follow us for tutorials on YouTube
www.rileyblakedesigns.com

© 2023 Riley Blake Designs | All Rights Reserved.

This SKU guide is designed to support the enclosed quilt pattern
in conjunction with this Riley Blake Designs boxed kit.

Fabric requirements are listed to aid in proper fabric placement for this Riley Blake Designs Kit.

The fabrics and quilt images portrayed are virtual images.

The look of the physical project may differ when using actual fabric.