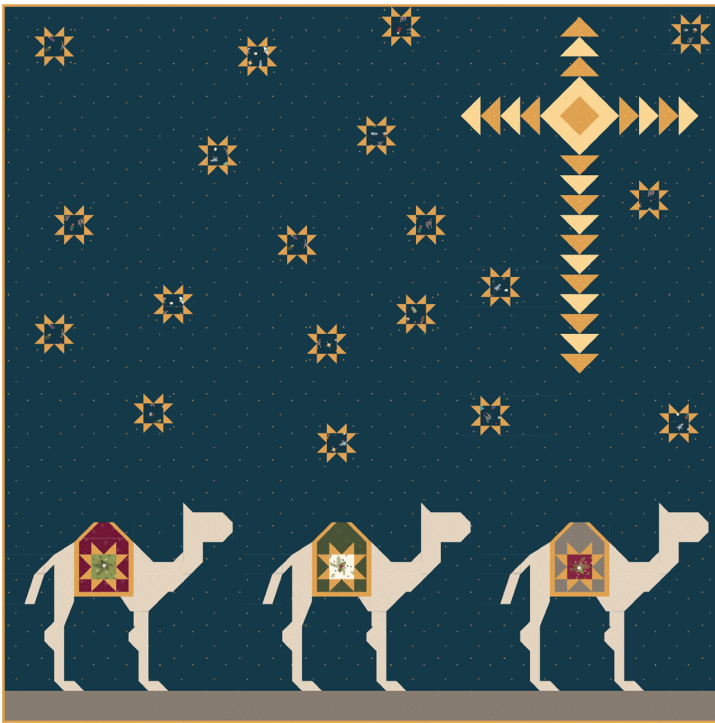


# PATTERN UPDATE



## SILENT NIGHT

### FOLLOW THE STAR



06/07/2023

**P. 6** Cutting and Fabric placement, from Fabric A

Right side column, third instruction should read:

- Cut (1) 1 ¼" x WOF strip.
  - Subcut (3) 7/8" squares for the Camel Blocks
  - Subcut (1) 1 ¼" x 5 ¼" rectangle and (1) 1 ¼" x 4 ½" for Column Assembly.

**P. 18** Step 69

Should read:

Place the 7/8" Fabric A square on the top left corner and the 1 ½" Fabric A square on the bottom left corner of (1) 2 ½" x 3" Fabric K rectangle, RST, aligning the edges as shown. Use the SNF method to add the squares to the rectangle. Set this Knee Unit aside for Step 71.

